



Centre: [REDACTED] Unit: [REDACTED]

September 2014

**Main Speciality: Oncology and Radiotherapy**

Dear participant,

Thank you for your participation in nutritionDay worldwide in November 2013 and for your effort. We are now able to present you your oncology short report of the following sample size.

Number of patients on nutritionDay: 43
Number of cancer patients on nutritionDay: 21 <i>(referring to sheet 2 regular "affected organs")</i>
Number of patients completing Sheet 2_onco: 41
Number of patients completing Sheet 3_onco: 41

Your oncology report reference results are based on data of cancer patients of all specialties of nutritionDay 2012.

The nutritionDay oncology short report provides most important results of your oncology patients as well as nutritional care structures and care routines for cancer patients in your unit. Detailed results are provided in your regular unit report and your oncology report.

You will find some explanations how to read and interpret the data on the next page.

**Next year's nutritionDay will take place on November 2014. Again, we would very much appreciate your participation. You will be provided with further information on a regular basis.**

Best regards from the nutritionDay-Team!

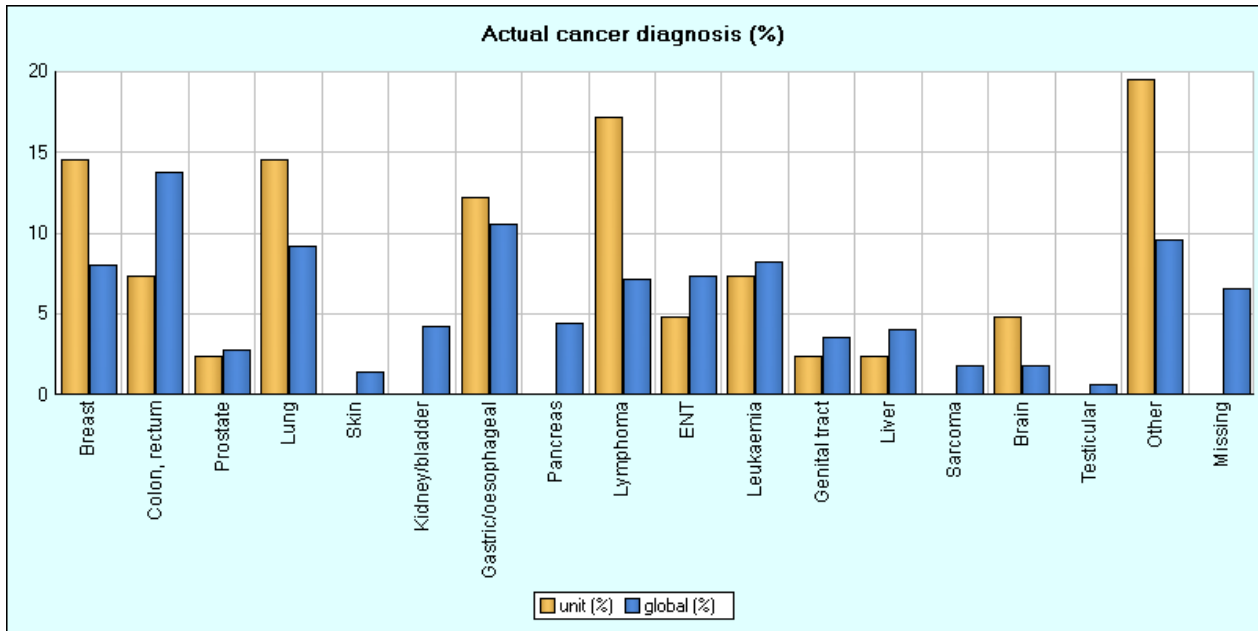
Prof. Dr. Michael Hiesmayr

PD. Dr. Karin Schindler

Sigrid Kosak, MA

**Patient's demographics**

Number of patients completing Sheet 2_onco	41	2515
Age (years)	55 [16-80]	64 [3-113]
Female gender	17 (41,5%)	1095 (43,5%)
Weight (kg)	60,2 ± 15,5	67,7 ± 16,7
Height (cm)	159,5 ± 6,8	166,2 ± 10,4
BMI (kg/m <sup>2</sup> )	23,5 ± 5,5	24,4 ± 5,2



**Cancer staging**

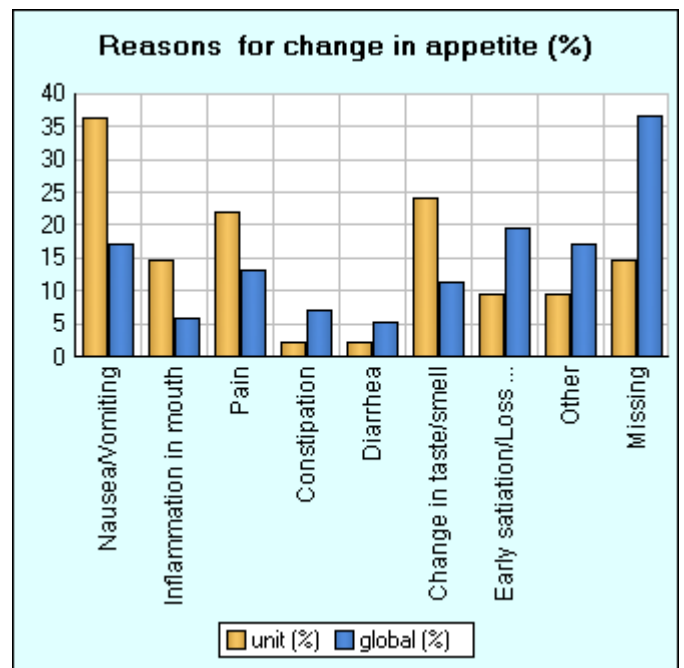
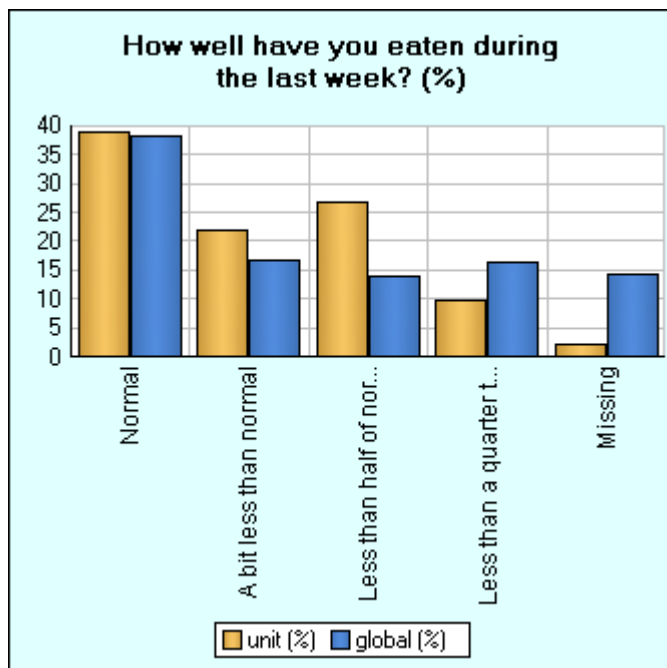
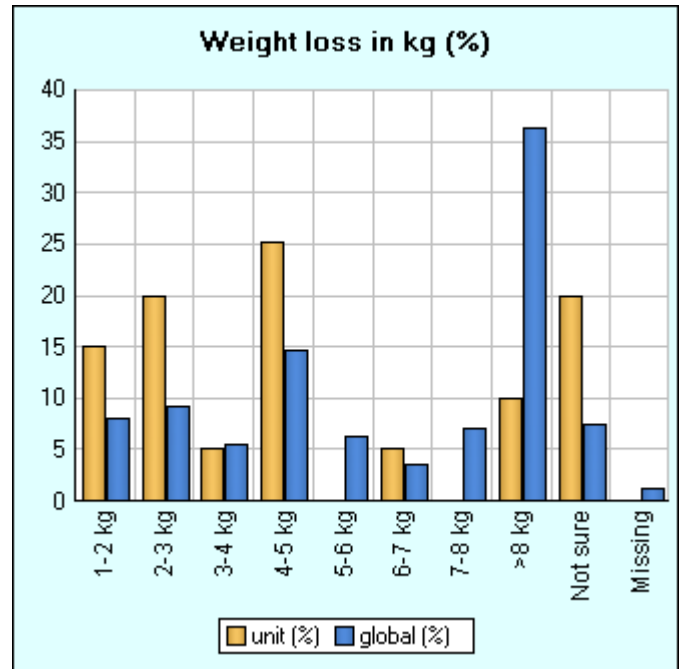
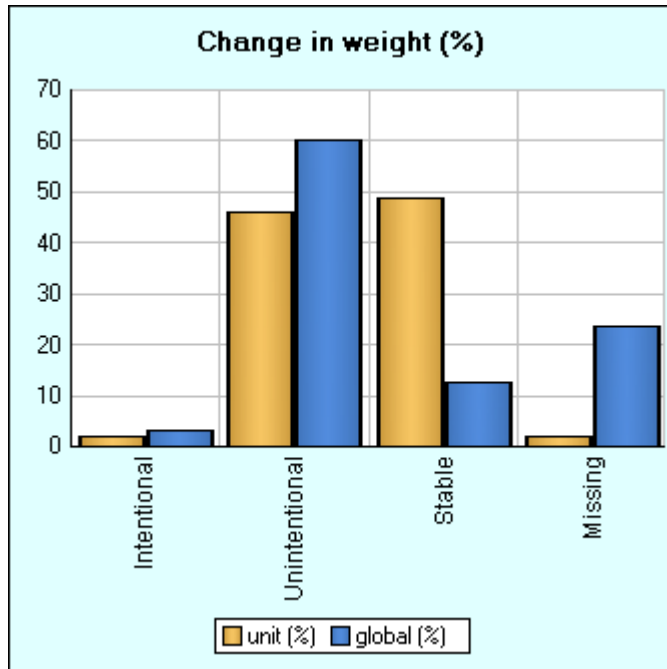
0=Carcinoma in situ	12 (29,3%)	122 (4,85%)
I=Localized	8 (19,5%)	372 (14,8%)
II=Early locally advanced	8 (19,5%)	329 (13,1%)
III=Late locally advanced	5 (12,2%)	346 (13,8%)
IV=Metastasised	7 (17,1%)	860 (34,2%)
Missing	1 (2,44%)	486 (19,3%)

**Therapy situation**

Diagnosis	7 (17,1%)	199 (7,91%)
Chemotherapy 1 <sup>st</sup> line	9 (22,0%)	410 (16,3%)
Chemotherapy > 1 <sup>st</sup> line	10 (24,4%)	426 (16,9%)
Radiotherapy	6 (14,6%)	254 (10,1%)
Target therapy	-	131 (5,21%)
Hormone therapy	-	24 (0,95%)
Palliative	-	315 (12,5%)
Surgery	6 (14,6%)	528 (21,0%)
Cancer related complications	4 (9,76%)	222 (8,83%)
Therapy related complications	-	113 (4,49%)
Missing	-	233 (9,26%)

**General health status of patients**

Excellent	0 (0,0%)	47 (1,9%)
Very good	0 (0,0%)	99 (3,9%)
Good	14 (34,1%)	660 (26,2%)
Fair	18 (43,9%)	729 (29,0%)
Poor	9 (22,0%)	615 (24,5%)
Missing	0 (0,0%)	365 (14,5%)



**During the last week**

Patients who have had pain	36 (87,8%)	1394 (55,5%)
Patients who needed a rest	40 (97,6%)	1696 (67,4%)
Patients who felt weak	37 (90,2%)	1644 (65,4%)
Patients who felt depressed	36 (87,8%)	1221 (48,6%)
Patients who were tired	36 (87,8%)	1620 (64,5%)
Patients whose pain interfered with their daily activities	36 (87,8%)	1230 (48,9%)
Patients who lacked appetite	31 (75,6%)	1344 (53,4%)

