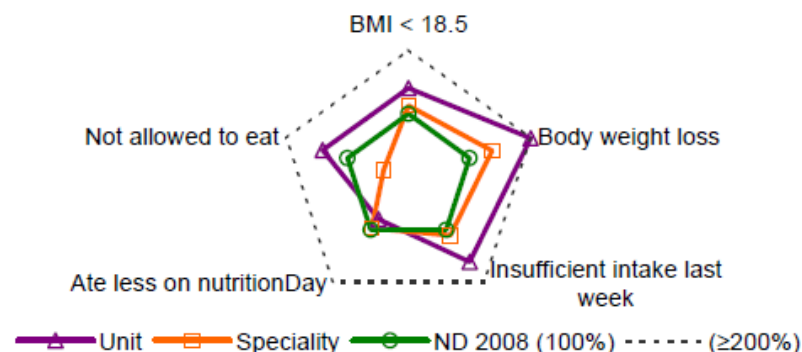


## nutritionDay 2008 - Results at a glance

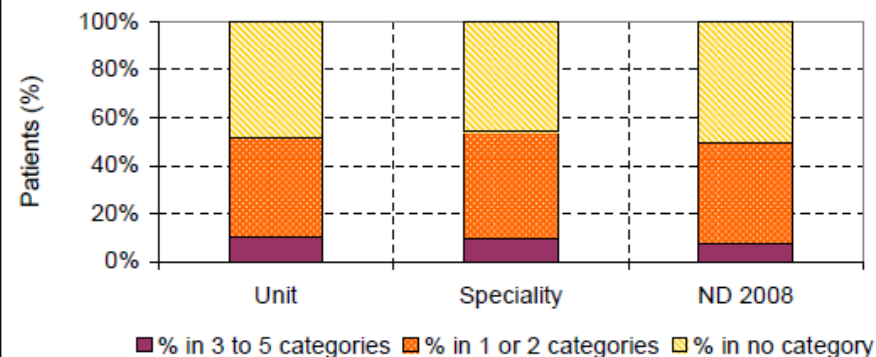
### Indicators for nutrition risk (% patients)

Categories	Unit	Speciality	ND 2008
BMI < 18.5	10.3%	8.3%	7.4%
Body weight loss	82.4%	55.7%	40.7%
Insufficient intake last week	35.3%	24.2%	21.8%
Ate less on nutritionDay	17.6%	21.5%	22.2%
Not allowed to eat	5.9%	1.7%	4.2%

### Proportions of patients in nutrition risk categories



### Proportions of patients in nutrition risk categories



Unit code:	Centre code:		
Speciality:	Oncology and Radiotherapy		
<b>Number of beds</b>			
Actual:	30	Maximum:	40
<b>Patients on nutritionDay (n(%))</b>			
Total:	29	Female:	18 (62.1%)
Patients compl. sheet 3a:	17 (58.6%)	Age (median [min-max]):	62 [25-78]
Patients compl. sheet 3b:	17 (58.6%)		
<b>BMI (kg/m<sup>2</sup>)</b>			
BMI (mean ± st dev):	24.9 ± 6.2		
BMI < 18.5:	3 (10.3%)	BMI > 30.0:	5 (17.2%)
Physicians per patient:	0.13	Patients needing help completing the questionnaire:	-
Nurses per patient:	0.18		
Nursing aides per patient:	0		
<b>"Can you walk without assistance?" (n(%))</b>			
Yes:	12 (70.6%)	No, I stay in bed:	2 (11.8%)
No, only with assistance:	3 (17.6%)	Missing:	-
<b>Nutrition therapy (n(%))</b>			
Enteral nutrition:	-	Protein supplement:	-
Parenteral nutrition:	4 (13.8%)	Hospital food:	16 (55.2%)
EN + PN nutrition:	-	Others:	-
Special diet:	3 (10.3%)	Missing:	6 (20.7%)
<b>"How well did you eat on nutritionDay?" (n(%))</b>			
All:	9 (52.9%)	Nothing:	2 (11.8%)
Half:	5 (29.4%)	Missing:	-
Quarter:	1 (5.9%)		
<b>Outcome after 30 days (n(%))</b>			
Still in hospital:	3 (10.3%)	Others:	-
Transf. to other hospital:	1 (3.4%)	Missing:	-
Transf. to long-term-care:	-		
Rehabilitation:	-		
Discharge home:	22 (75.9%)		
Death:	3 (10.3%)	Readmitted:	-